



# PIANC

PIANC Japan – MLIT – OCDI - CDIT



## PIANC MarCom Seminar in Japan 2013

### Activities of MarCom

Francisco Esteban Lefler  
Chairman of MarCom

Tokyo, September 13, 2013





# PIANC

## Contents

- **MarCom in PIANC**
- **MarCom members**
- **MarCom activities in PIANC**
- **MarCom meetings**
- **Working Groups**
- **Reports published in 2012-2013**
- **Reports expected for publication**
- **Active and in formation Working Groups**
- **Cooperation with other PIANC Commissions**





# PIANC

## The World Association for Waterborne Transport Infrastructure

### Vision:

*PIANC shall enhance its position as the leading international source of waterborne transport infrastructure related knowledge*

### Mission:

*PIANC shall continue to provide expert guidance and technical advice through high-quality technical reports and will keep the international waterborne transport community connected through a variety of products on a global scale*

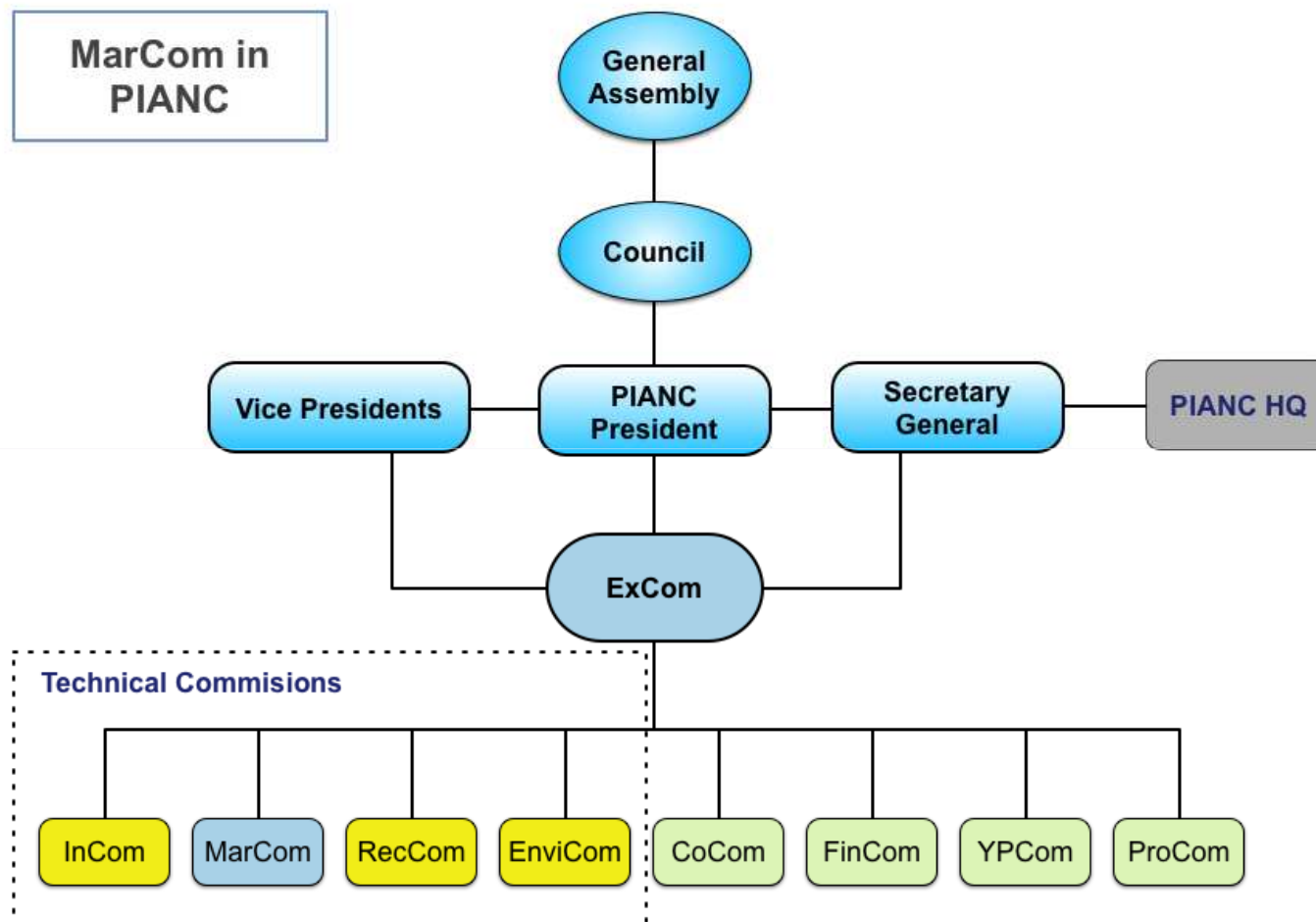


Source: PIANC Strategic Plan



# PIANC

## MarCom in PIANC





# PIANC

## Members

**Chairman: Francisco Esteban Lefler (Spain)**

**Secretary: Dominique Etienne (France)**

**Belgium: Luc Van Damme  
Hadewych Verhaeghe (YP)**

**Colombia: Gerardo Castaño  
Juan Francisco Herrera**

**Denmark: Hans F. Burcharth**

**Egypt: Adel Banawan**

**Finland: Veikko Saukkonen  
Kim Andersson-Berlin (YP)**

**France: Dominique Etienne**

**Germany: Stefan Hauser**

**India: Bhuvaragan Poiyaamozhi**

**Iran: Ali Akbar Safaei**

**Italy: Andrea Ferrante**

**Japan: Yoshiaki Higuchi**

**Korea: Taek Hee Han**

**The Netherlands: Arjan van der Weck**

**Norway: Tore Lundestad**

**Spain: Rafael Escutia**





# PIANC

## Members (II)

**Sweden:** Kjell Karlsson  
Mattias Sandell

**Turkey:** Burak Bilgin (2013)

**United Kingdom:** Peter Hunter  
Stephen Cork (alt)

**YPCOM Observer:** Javier Almazán  
(2013)

**U.S.A.:** E. Dan Allen  
Vahan Tanal (alt.)

**IAPH:** Fer M. J. van de Laar

## 28 Members, of which:



- 19 National Sections
- 1 IAPH
- 4 Alternate
- 3 YP's
- 1 Chairman

And coming soon:  
Poland

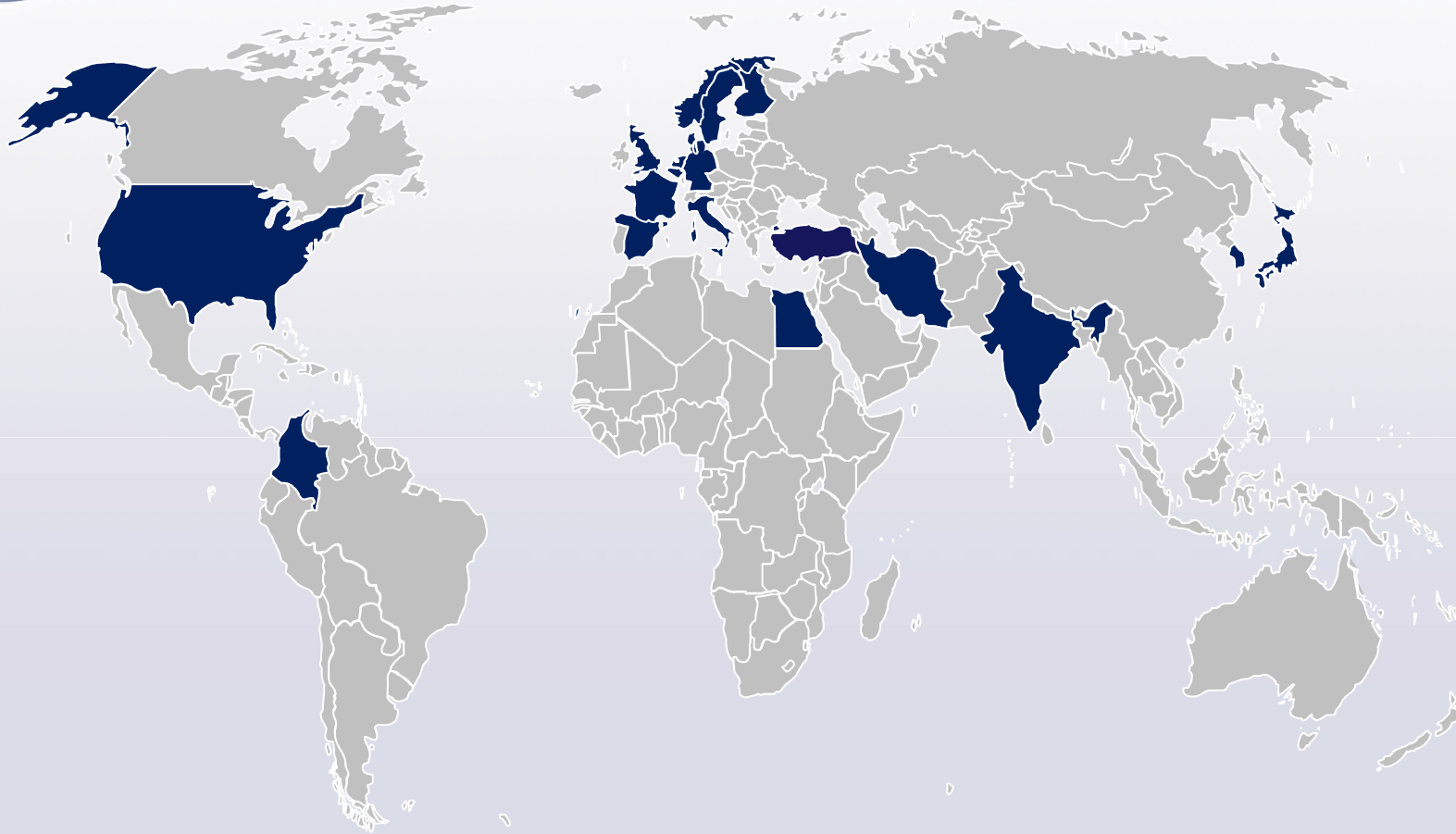






# PIANC

# MARCOM





# PIANC

## Professional Profile of MarCom members:

- **Public Administrations within the Port sector**
- **Port Authorities**
- **Specialized Technological Centres (Public and Private)**
- **Consultants and Engineering Companies**
- **Dredging Companies**
- **Construction companies**
- **Navigation Authorities**







# PIANC

## Commission members:

- **National Sections can designate:**
  - **1 Representative**
  - **1 Alternate**
  - **1 Young Professional**
- **Term: 4 years + 2 x 4 years + 4 years (should be approved by ExCom)**
- **Chairperson: designated by the Council**
  - **Term: 4 years + 2 x 4 years (ExCom)**
- **Vice-chairperson (Commission and ExCom)**
- **Secretary (Chairperson)**





# PIANC

## Main activities of PIANC Technical Commissions

- Execute parts of the Strategic Plan
- Generate, manage, coordinate and supervise Working Groups
- Propose subjects for Congresses and Conferences
- Take initiatives to produce articles for the Magazine “On Course”
- Report on its technical and non-technical activities (web, PIANC Yearbook, “Sailing Ahead”,...)
- Implement agreements of PIANC with Sister Associations
- Oversee projects carried out by experts
- Participate in relevant internal and external conferences, seminars, workshops, debates, etc.
- Seek funding for PIANC activities
- Advise PIANC President and General Secretariat
- Charge sub-Commissions or Task Groups with specific tasks





# PIANC

## Specific Activities of MarCom

- Deal with Maritime Ports and Seaways issues
- Cooperate with other Commissions in topics of common interest (inland or recreation navigation, environmental issues, etc.)
- Cooperation and communication with other international organizations as:
  - IMO
  - IAPH
  - WODA
  - Etc.





# PIANC

## MarCom Meetings 2012:

- Brussels – PIANC HQ January 31<sup>st</sup> and February 1<sup>st</sup> .
- Wilhelmshaven – Germany on September 20<sup>th</sup> and 21<sup>st</sup>, followed by a technical visit to the new deep water container port in Wilhelmshaven “JadeWeserPort”

## MarCom Meetings 2013:

- Brussels – January 29<sup>th</sup> and 30<sup>th</sup>
- Sendai – Japan on September 11<sup>th</sup> and 12<sup>th</sup> followed by a MarCom Seminar in Tokyo (September 13<sup>th</sup>)

## MarCom Meetings 2014:

- Brussels, February
- Probably Venice (Italy), September





# PIANC

## Topics usually addressed in MarCom meetings

- Report on general PIANC news and issues
- MarCom composition
- Follow-up of Action Plan derived from PIANC Strategic Plan
- Working Groups:
  - Analysis of the status
  - Presentations of ongoing WG's
  - Discussion of interim or final draft reports
  - WG's information
  - New Terms of Reference for WG's
- Cooperation with other Commissions and Sister Associations
- Other MarCom issues:
  - Improvements on WG management process
  - Future areas of activities
  - .....and many more issues

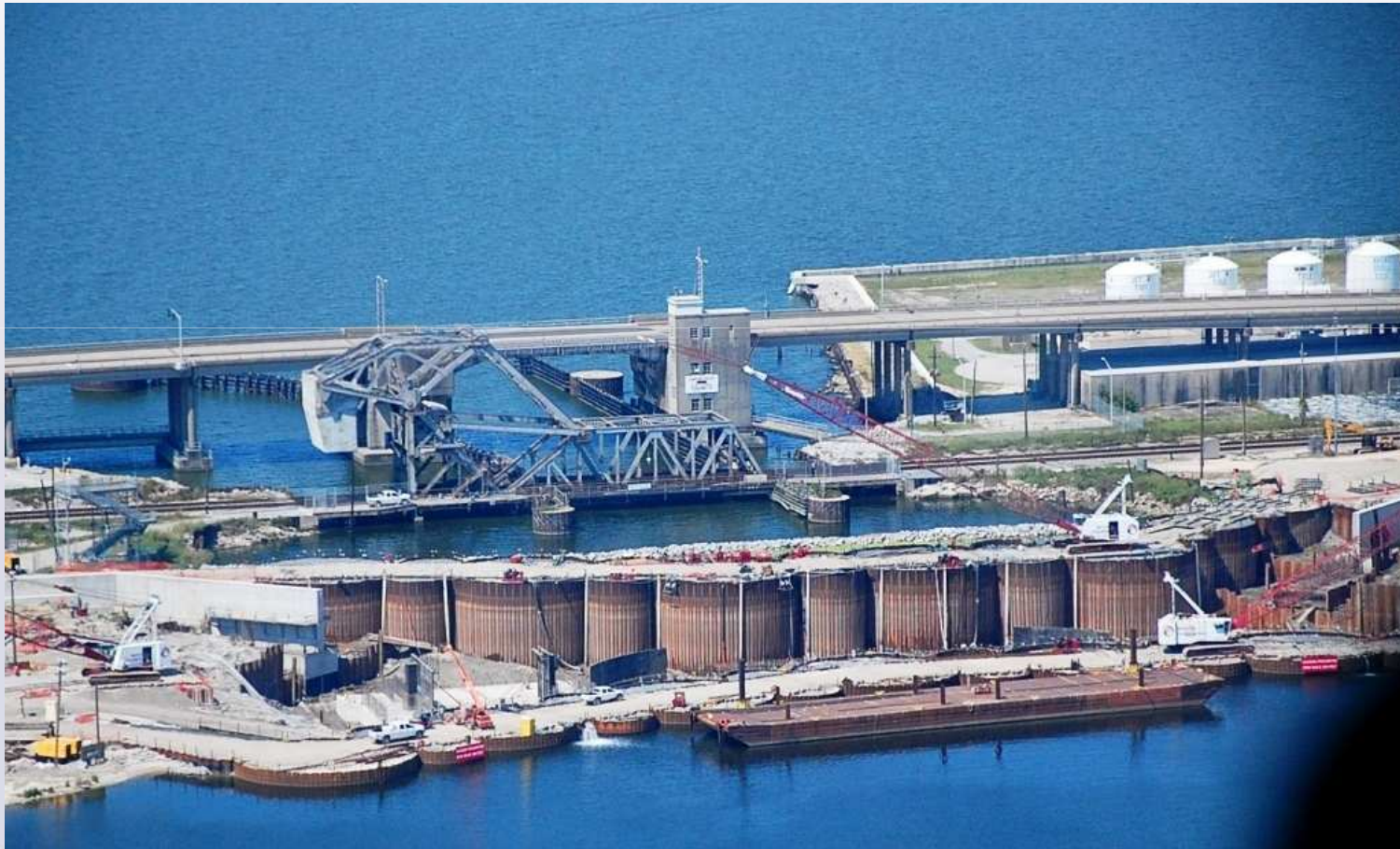






# PIANC

## Technical Visit September 2011 : Hurricane Surge Barrier in New Orleans (USA)







# PIANC

## Technical Visit September 2012: Deep water container Port in Wilhelmshaven (Germany)





# PIANC

## Working Groups (approx. 2 years)

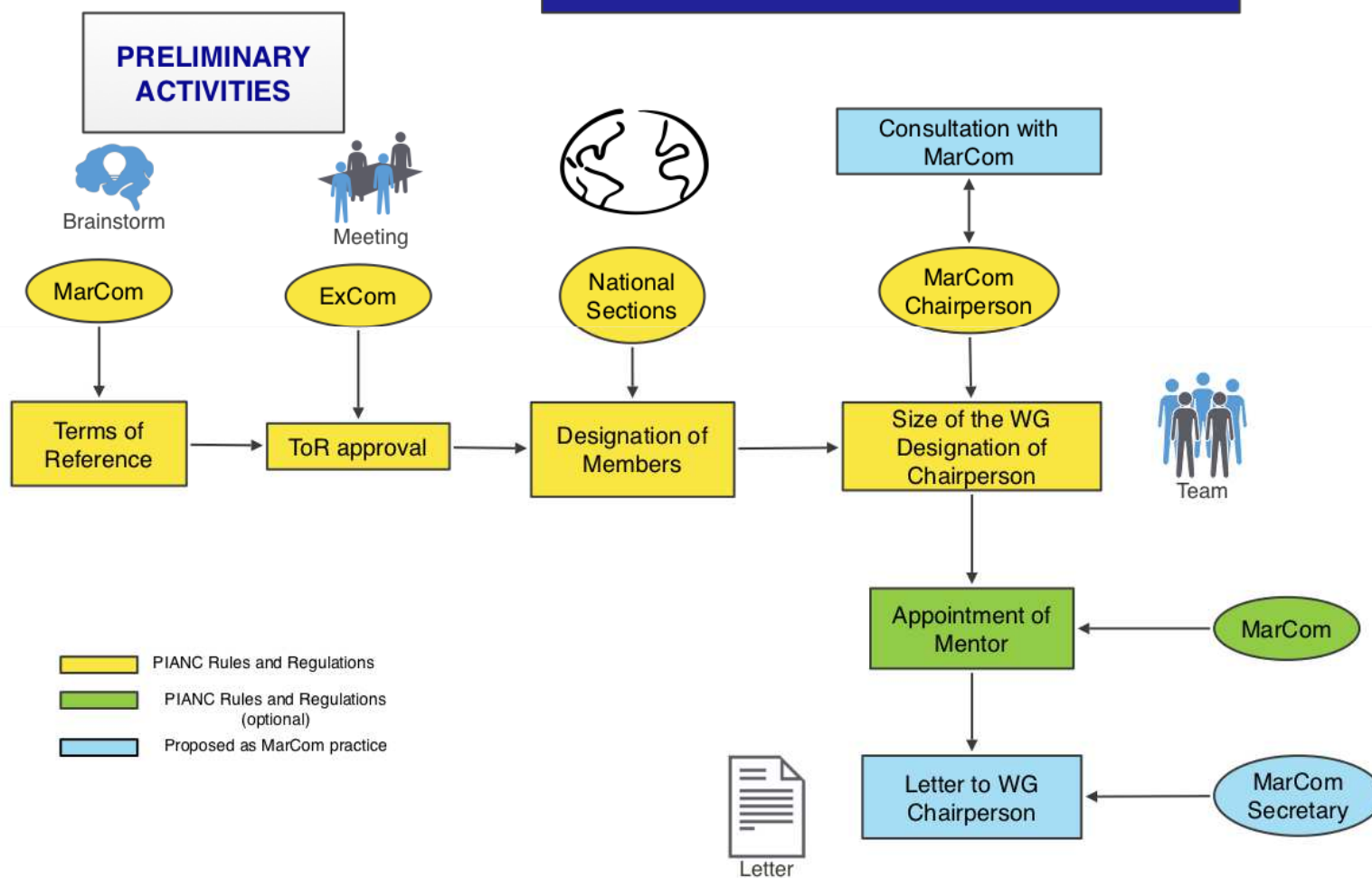
- **Members (Experts designated by National Sections):**
  - 1 Representative
  - 1 Alternate
  - 1 Young Professional
- **Working Group members can be:**
  - Individual PIANC members
  - Employees of Corporate members
  - Member of Sister Organizations
  - Invited experts
- **Possibility for Corresponding members**
- **Chairperson appointed by Chairperson of supervising Commission**
- **MarCom mentor**





# PIANC

## MARCOM WORKING GROUPS (1)



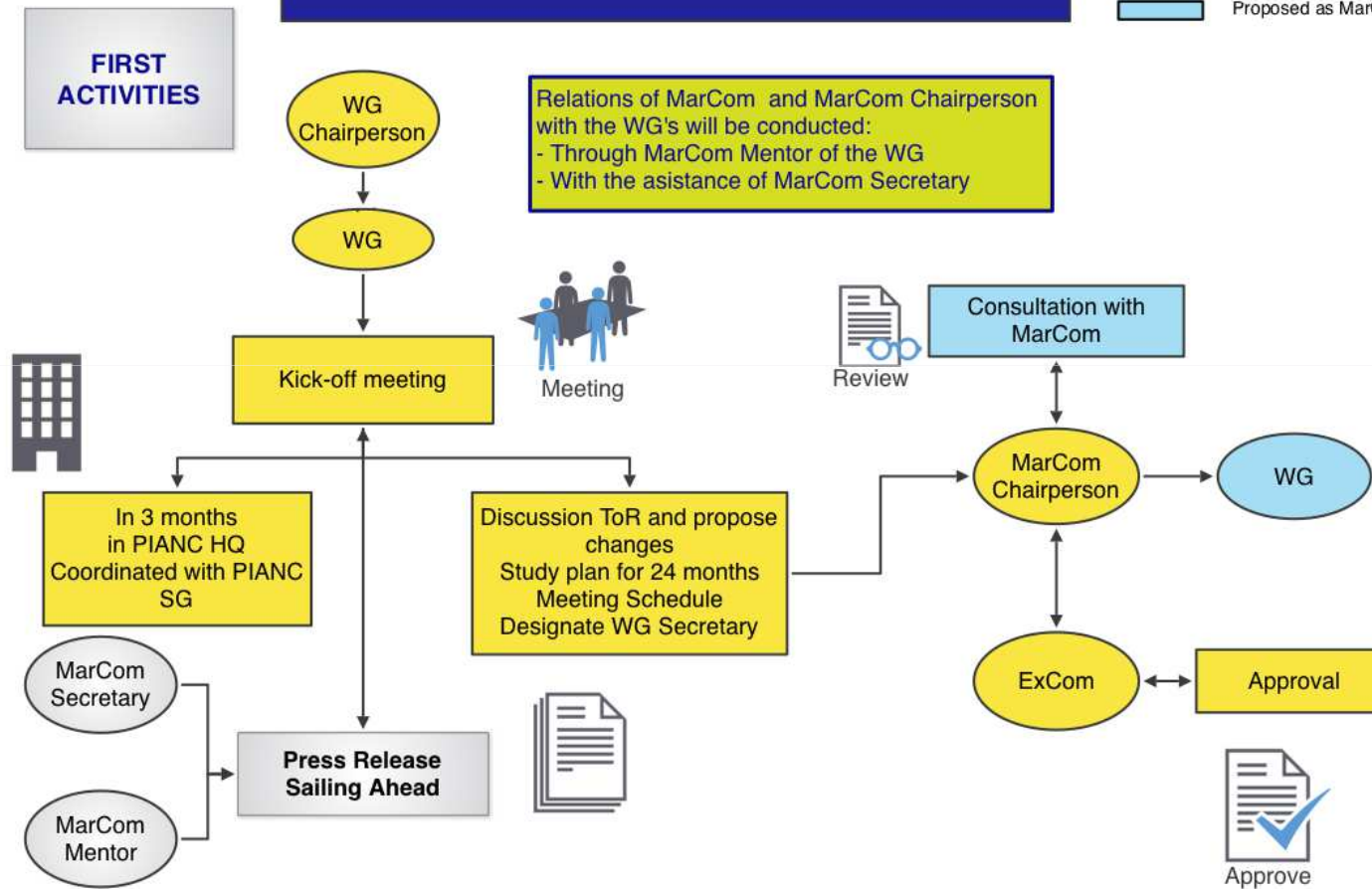




# PIANC

## MARCOM WORKING GROUPS (2)

- PIANC Rules and Regulations
- PIANC Rules and Regulations (optional)
- Proposed as MarCom practice





# PIANC



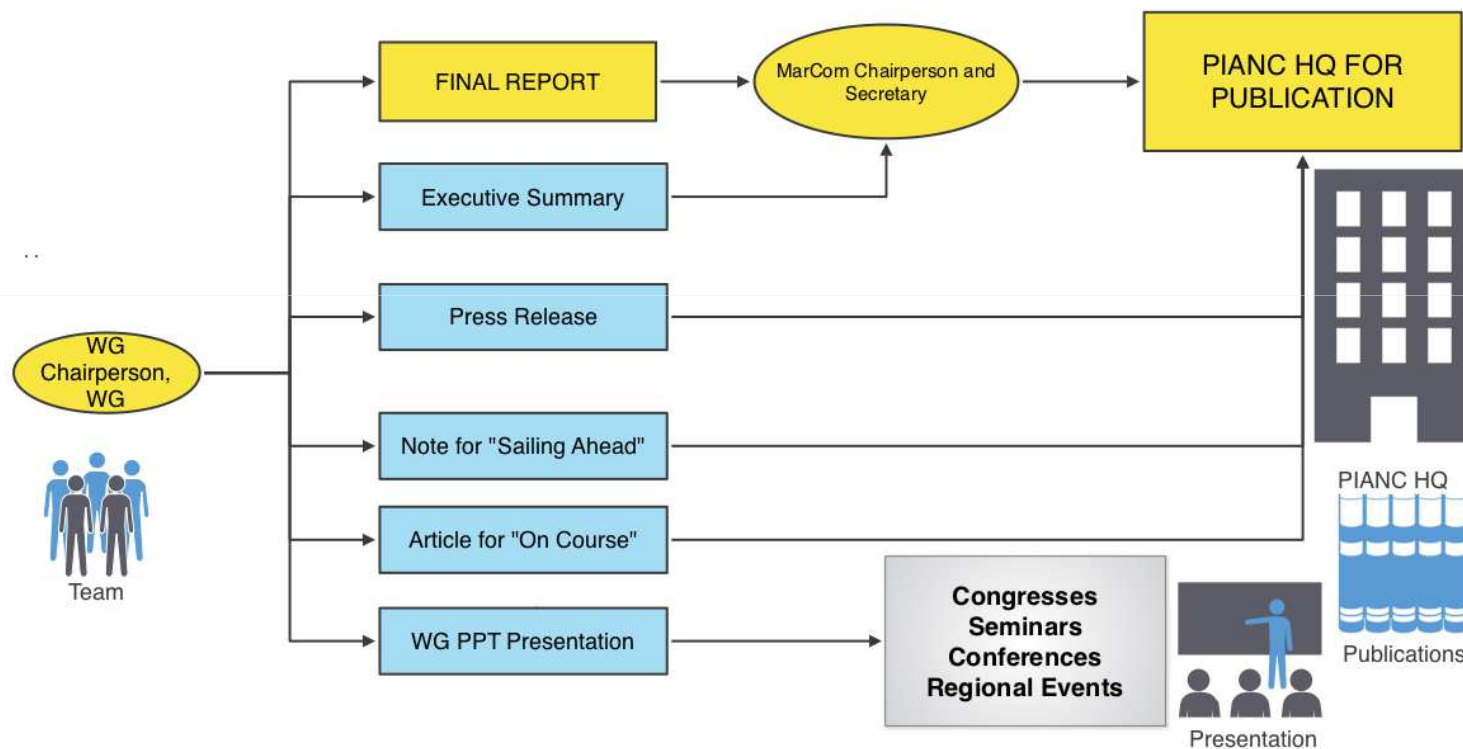


# PIANC

WORKING  
GROUPS  
FINALIZATION

## MARCOM WORKING GROUPS (4)

- PIANC Rules and Regulations
- PIANC Rules and Regulations (optional)
- Proposed as MarCom practice

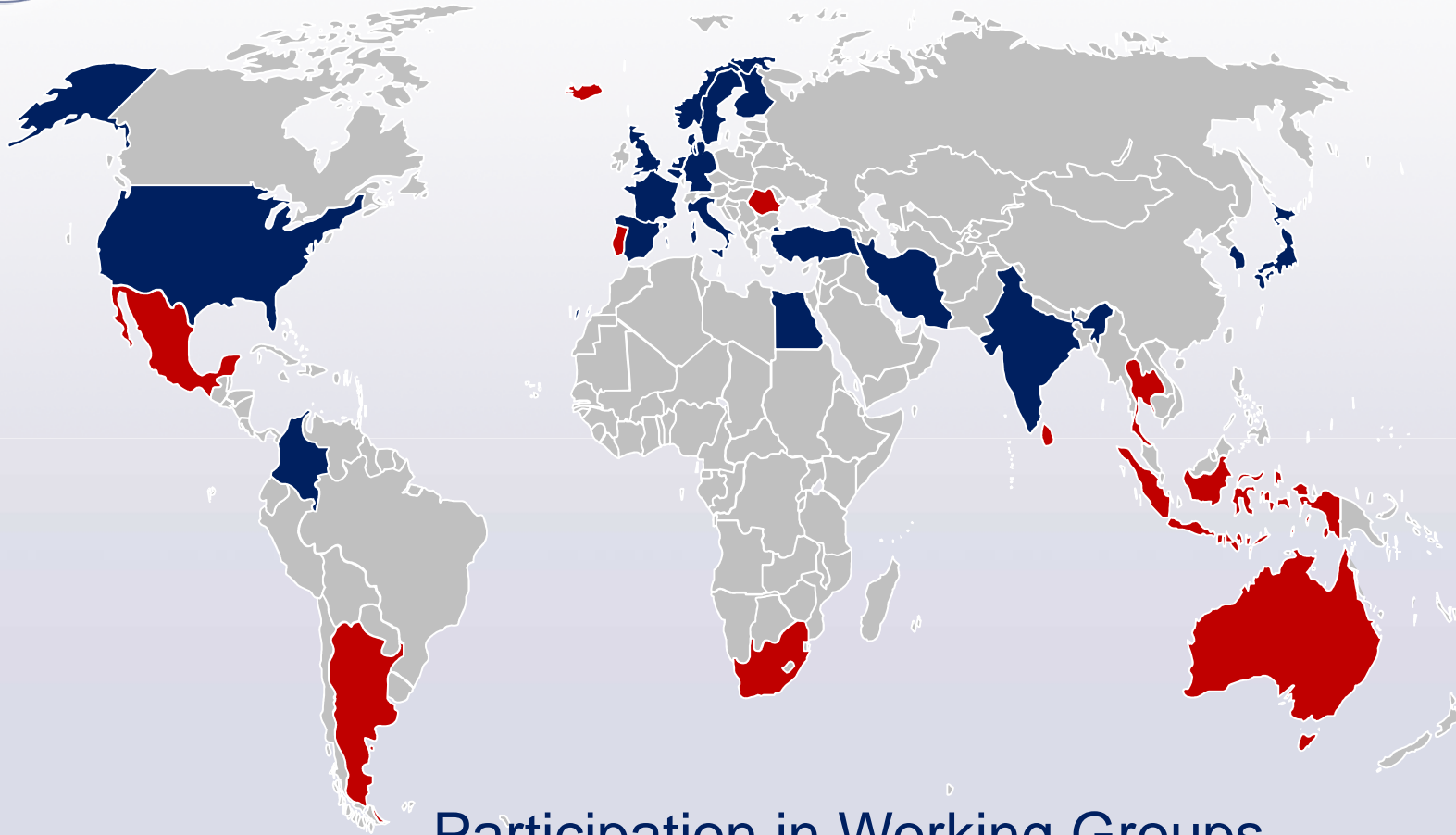






# PIANC

# MARCOM



## Participation in Working Groups



**Associations: IAPH, FIB (Fédération Internationale du Béton – The International Federation for Structural Concrete)**



# PIANC

## WG-reports published in 2012 - 2013



### MarCom WG 115

**(WG 52) 'Criteria for the (un)loading of Container Vessels'**

**(Chairman: Mr Mohns)**



# PIANC

## MarCom WG 115 Criteria for the (un) loading of container vessels

- Set updated criteria for maximum allowable movements taking into consideration:
  - Increasing vessel size
  - Use of more exposed locations
- Factors affecting (un) loading efficiency
  - Ship motion driving factors
  - Container ships characteristics
  - Ship mooring
  - (Un) Loading process
- Development of motion criteria associated to efficiency levels
- Application of motion criteria





# PIANC

## WG-reports published in 2012 - 2013



### MarCom WG 116

***(WG 55) 'Safety aspects affecting the berthing operations of Tankers to Oil and Gas Terminals'***

**(Chairman: Mr Thoresen)**



# PIANC

## **MarCom WG 116 Safety aspects affecting the berthing operations of tankers to oil and gas terminals**

- Safety management and risk assessment applied to port transit, towage, pilotage and passage planning
- Environmental conditions and forces
- Transit from open sea to terminals (approach channels, tug assistance, clearances, manoeuvring areas, locks,...)
- Berthing and mooring systems
- Space for safe berthing
- Acceptable metocean conditions for safe(un) berthing
- Operational safety
- Nautical port information
- Ship characteristics







# PIANC

## WG-reports published in 2012 - 2013



### MarCom WG 117

**(WG 54) 'Use of Hydro/Meteo information for Port Access and Operations'**

**(Chairman: Mr O'Brien)**





# PIANC

## MarCom WG 117 Use of Hydro/Meteo information for Port Access and Operations

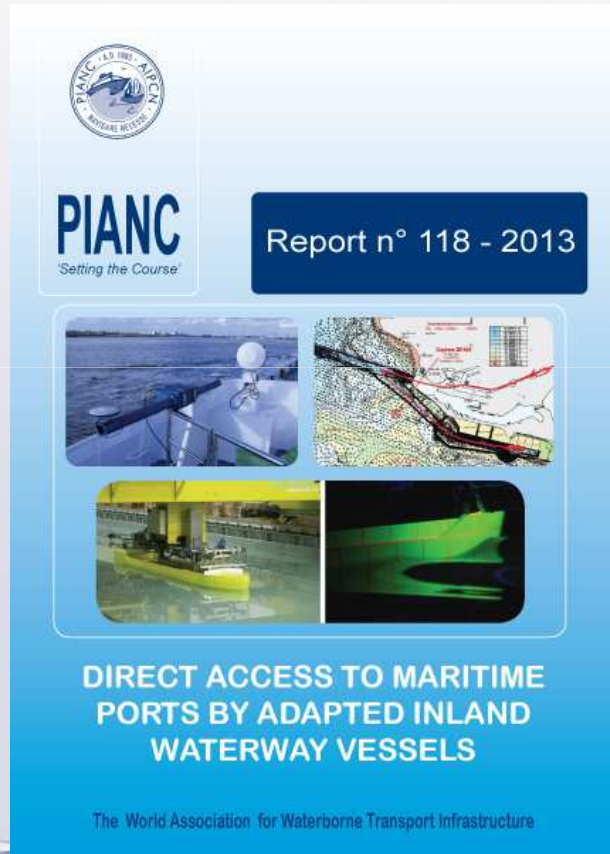
- Hydro/Meteo system requirements for various end-user needs:
  - Vessel access
  - Anchorage
  - (Un) Berthing
  - Offshore moorings and terminal operations
  - Search and Rescue, spill control
- Systems for measure, acquisition and management of Hydro/Meteo data (reliability and accuracy)
- Recommendations on the use of the information for the various end-users
- Case Studies





# PIANC

## WG-reports published in 2012 - 2013



### MarCom - Incom EG 118

*‘Direct Access to Maritime Ports by adapted  
Inland Waterway Vessels’*

(Chairman: Mr Caude)





# PIANC

## **MarCom-InCom EG 118 Direct Access to maritime ports by adapted inland waterway vessels**

- **Case Studies in Europe, U.S.A. And China**
- **Methods use to improve safe access:**
  - **Wave and wind analysis and environmental forces**
  - **Evaluation of restricted seaworthiness of inland vessels in maritime area, risk analysis for the vessel**
  - **Practice analysis**
- **Recommendations**





# PIANC

## WG-reports published in 2012 - 2013



### MarCom WG 120

### WG 51 'Injection Dredging'

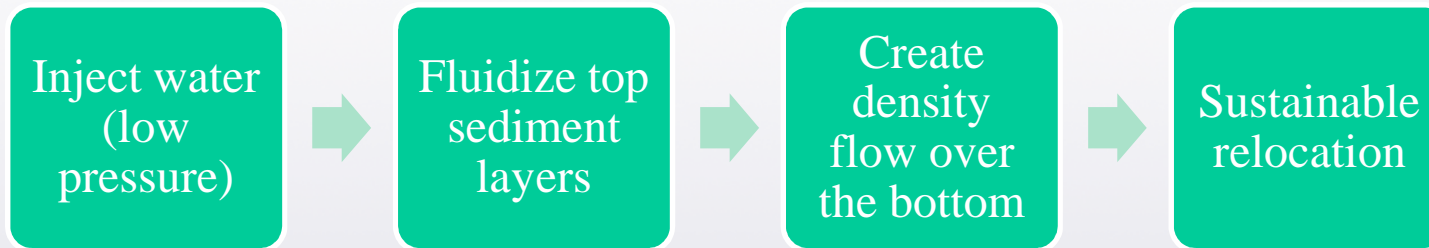
(Chairman: Mr. Smits)





# PIANC

## MarCom WG 120 Injection Dredging



- **Theoretical analysis and physical principles**
- **Natural boundary conditions required**
- **Typical applications:**
  - Maintenance dredging
  - Shallows in sandy rivers
  - Cleaning of locks, jetties and pipelines
  - Levelling of hopper tracks and trimming of slopes
- **Available equipment**
- **Environmental considerations**
- **Monitoring (operational, contractual and environmental)**
- **Contractual considerations**
- **Case Studies**







# PIANC

## **WG-reports expected to be ready for publication in 2013:**

**Publication “Tsunami Disasters in Ports due to the Great East Japan Earthquake” (Ready in HQ)**

**WG47 ‘Criteria for the Selection of Breakwater Types’**

**WG48 ‘Guidelines for Port Constructions related to Bow Thrusters’**

**WG49 ‘Harbour Approach Channels Design Guidelines’**

**WG135 ‘Design Principles for Container terminals in Small and Medium Ports’**

**WG144 ‘Classification of Soils and Rocks for the Maritime Dredging Process’**







# PIANC

## Other active WG's in 2013:

**WG145 'Berthing Velocities and Fender Design'**

**WG152 'Guidelines for Cruise Terminals'**

**WG153 'Recommendations for the Design of Marine Oil Terminals'**

**WG158 'Master Plans for the Development of Existing Ports'**

**WG159 'Renewable Energy for Maritime Ports'**

**EG160 'Overview of Design Codes and Guidelines for Harbour Structures'**

**WG161 'Interaction between Offshore Wind Farms and Maritime Navigation'**

**WG162 'Recommendations for Increased Durability and Service Life of marine concrete infrastructure'**

**WG165 'Design and maintenance of Container terminal Pavements'**





# PIANC

## **WG's in formation:**

**WG164 'Upgrade of Port terminals by increasing dredged depth'**

**WG167 'Design of Terminals for RoRo and RoPax vessels'**

**WG 171 'Ship Handling Simulation dedicated to Channel and Harbour Design'**

**WG 172 'Design of small and medium LNG Terminals including bunkering facilities'**





# PIANC

## Co-operation with other Commissions:

- Permanent Task Group on Climate Change (PTG CC)
- Working with Nature
- Working with Nature Awards (EnviCom)
- InCom (WG156): 'E-Navigation for Inland Waterways'
- InCom (WG155): 'Ship behaviour in Locks and Locks Approaches'
- InCom (WG140): 'Semi-Probabilistic Design Concept for Inland Hydraulic Structures'
- EnviCom (WG136): 'Sustainable Navigation'
- EnviCom (WG150): 'Green Ports, a practical guide for a sustainable seaport'
- RecCom (WG147): 'Guidelines for Facilitation and Integration among Recreational, Fishery and Commercial Navigation'





# PIANC

**On behalf of MarCom colleagues:  
Thank you for your attention!**

